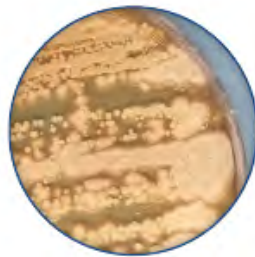




Prevent patient cross contamination from ENT Treatment Cabinet Reusable Suction Tubing.

CleanAdapt™ allows for no direct contact between suction cannula and reusable suction tube. This helps prevent potential contamination with the reusable suction tube and vacuum system.

Individual components of ENT suction and fluid collection systems are frequently contaminated and may become the source of infection. Each component of the ENT suction system needs to be managed between procedures to minimize the possibility of cross contamination.



Culture from Ordinary Reusable Suction Tube*



Culture from Disposable CleanAdapt™**



CleanAdapt™ is an economical solution to provide a new clean connection at the terminal end of the reusable suction tubing between procedures. The CleanAdapt™ system consist of a miniature clean tube with adapter for connecting sterile or clean Frazier/Baron type suction cannulas to the main reusable suction tubing for an ENT Treatment Cabinet Suction System or pump.

Quick & Easy Implementation



1 Connect to Reusable Tubing



2 Connect to Instrument



3 CleanAdapt™ Ready to Use

*Total Recoverable Aerobic and Fungi Bioburden as CFU's per sample = too numerous to count
**Total Recoverable Aerobic and Fungi Bioburden as CFU's per sample = 0

BR980-9257: CleanAdapt™, Barbed adapter w/ 3" tubing, 25/Box

Over 20,000 Surgical Instruments & Procedure Sets • Endoscopic Video Equipment & Related Medical Devices